

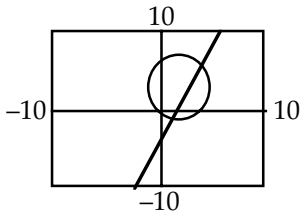
Problem Set 89 — Even Answers

2. 25 days

4. 8000 ft

6. $\left(\frac{1}{2}, 1\right)$

8. $(0, -4), \left(\frac{16}{5}, \frac{12}{5}\right)$



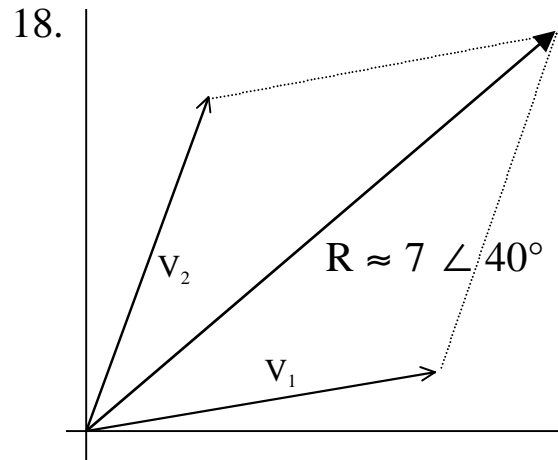
10.

$(6.2, 5.4), (3, -1)$

12. $Y_1 = -1 + \sqrt{9(x+4)^2 - 9}$
 $Y_2 = -1 - \sqrt{9(x+4)^2 - 9}$

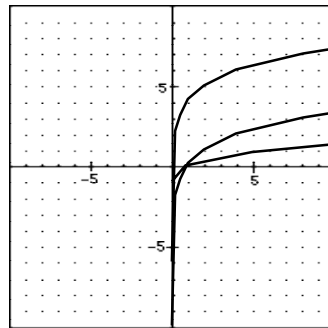
14. $x = \frac{3}{2}$

16. $x = -5, 5$



20. $\approx 6.064i + 7.767j$
 $\approx 9.854 \angle 52.020^\circ$

22. $O = 6.972 I - 111.795$



26. $SA = 8 + 32\sqrt{2} + 20\pi \text{ cm}^2$
 $\approx 116.087 \text{ cm}^2$

28. $-\frac{14}{17} - \frac{5}{17}i$

30. $-\frac{7\sqrt{6}}{12}$