

Problem Set 81 — Even Answers

2. 17.932 miles at 221.443°

4. $\frac{15(60)}{4(12)5280} \approx 0.00355$ mph

6. 70°

8. $6 \angle -223^\circ$
 $-6 \angle 317^\circ$
 $-6 \angle -43^\circ$

10. $\approx -6.389i + 5.335j$
 $\approx (8.324, 140.135^\circ)$

12. $x - x^{\frac{1}{2}}y^{-\frac{1}{4}} + x^{\frac{1}{2}}y^{\frac{1}{2}} - y^{\frac{1}{4}}$

14. (20, 10)

16. (1, 2, 4)

18. $x = -4, 0, 2$

20a. $\frac{\sqrt{6}}{6} \approx 0.408$

b. 4

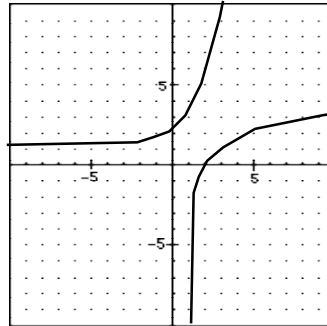
c. ≈ 537.032

22a. $x = 0$

b. $x = \frac{1}{32}$

c. $\{x \in \mathfrak{R}, x \neq 0\}$

24. $f^{-1}(x) = \log_2(x - 1)$



26. $\frac{7x - 5}{x + 4}$

28. $-\frac{1}{6} + \frac{7}{6}i$

30. $x = 18$