

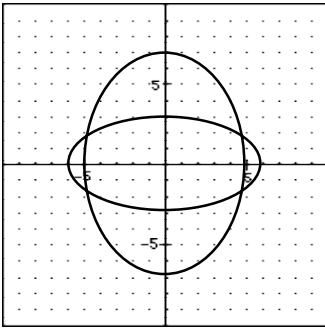
Problem Set 69 — Even Answers

2. 100 lbs

4. 100 mph

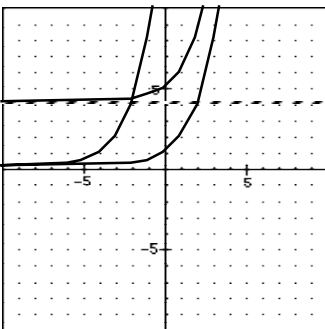
6.
$$\frac{330(100)(60)}{2.54(12)(5280)} \text{ mph}$$

$$\approx 12.303 \text{ mph}$$



8.

10.
$$Y_1 = \sqrt{4 - \frac{4}{55}x^2}, \quad Y_2 = -Y_1$$



12.

14. $4 - 12i$

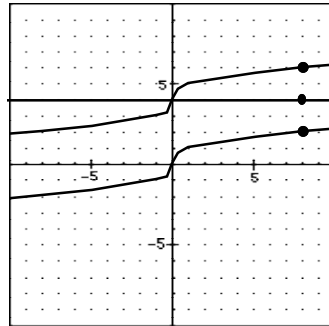
16. $(4 + 2\sqrt{6}) - 4i$

18. $2 - \sqrt{2}$

20. (10, 17.321)

22.
$$g^{-1}(x) = \frac{7x - 3}{2 + 4x}$$

24a. $(f + g)(x) = x^{\frac{1}{3}} + 4$



b.

c. $f(8) = 2, g(8) = 4, (f+g)(8) = 6$

d. equal

26. $x = \frac{1}{2}, 0, -7$

28a. rational, real

b. rational, real

c. rational, real

30.
$$\frac{2x^{-9}y^{-2}}{3}$$