

Problem Set 64 — Even Answers

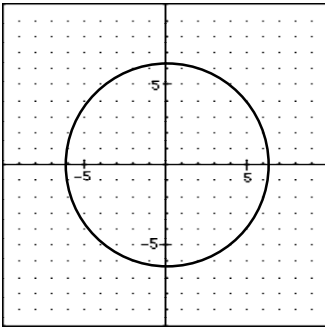
2. 50 ml of 40%
200 ml of 80%

4. ≈ 46.196 ft / sec
 ≈ 31.497 mph

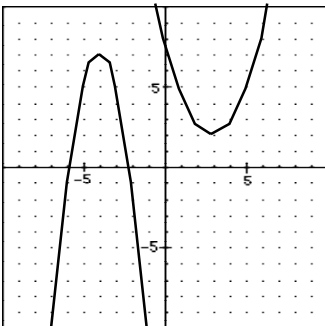
6. 1027 g

8. 370 cm

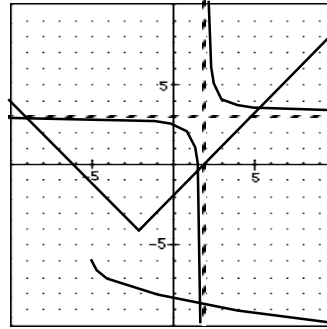
10. $\frac{5280(12)(2.54)}{100} \approx 1609.344$ m
1600 m is approximately 9 meters less than one mile.



12. $Y_1 = \sqrt{6.3^2 - x^2}$, $Y_2 = -Y_1$



- 14.



- 16.

18. $x = 2$, $y = 30$, $z = 150$

20. $5 - i$

22. $x + y$

24. 69

26. $x = -\frac{1}{20} \pm \frac{\sqrt{241}}{20}$
 $\approx -0.826, 0.726$

28. $x = -4, 0, 6$

30. $x = 10$, $y = 2$