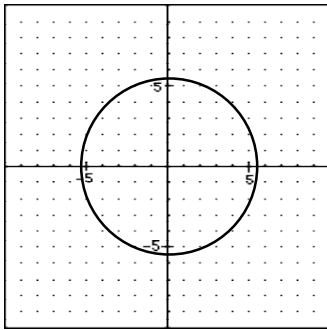


Problem Set 61 — Even Answers

2. 28, 98

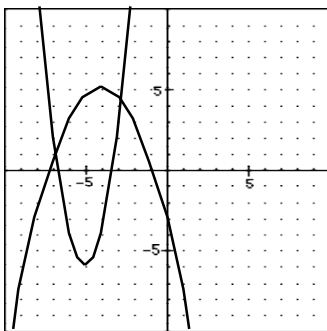
4. a is the dilation factor, b controls the horizontal translation (the x coordinate of the vertex), and c controls the vertical translation (the y coordinate of the vertex).



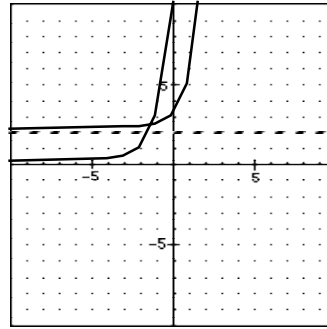
6.

$$Y_1 = \sqrt{\frac{121}{4} - x^2}, \quad Y_2 = -Y_1$$

8. $\sigma = \sqrt{26.8} \approx 5.177$



10.



12.

14. $x = -\frac{4}{3}, 1$

16. $x = -1, \frac{3}{2}$

18. $x = -8, -3, 0$

20. $x^{\frac{1}{2}} + 2x^{\frac{1}{4}}y^{-\frac{1}{3}} + y^{-\frac{2}{3}}$

22. $m = \frac{3ckp}{p + cd}$

24. x^{ab+b+4}

26. 12

28. $a = \frac{48}{7}, \quad b = \frac{35}{3}$

30. $A = B = 2\sqrt{5} \approx 4.472$