

Problem Set 60 — Even Answers

2. $P(7 \cup S) = \frac{4}{13}$

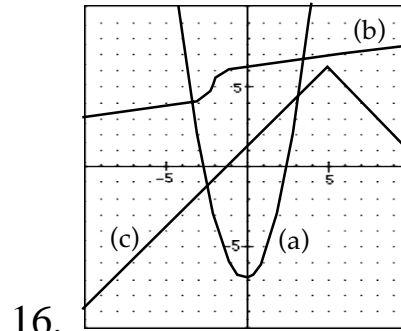
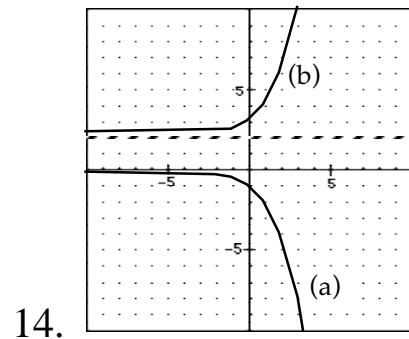
4. $R_B = 220 \text{ yd/min}$

6. $\frac{18(5280)(12)}{3600} \frac{\text{in}}{\text{sec}} \approx 316.8 \frac{\text{in}}{\text{sec}}$

8. $Y_1 = \sqrt{0.25 - x^2}$
 $Y_2 = -Y_1$
 This conic is an origin centered circle with a radius of 0.5.

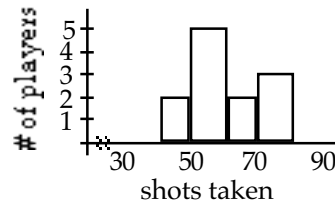
10. $x = -\frac{1}{5} \pm \frac{\sqrt{31}}{5} \approx -1.314, 0.914$

12. $x = -\frac{3}{2}, 6$



18. $y = \frac{3}{2}x + 13$
 $x = -\frac{26}{3}, \quad y = 13$

- 20a. whole, integer, rational, real
 b. irrational, real
 c. natural, whole, integer, rational, real



22. 7 players

24. $a^{mx+m} b^{mx+3x}$

26. $\frac{63 + 13\sqrt{5}}{-44}$

28. $x^{1/2} - 2x^{1/4}y^{1/4} + y^{1/2}$

30. 36