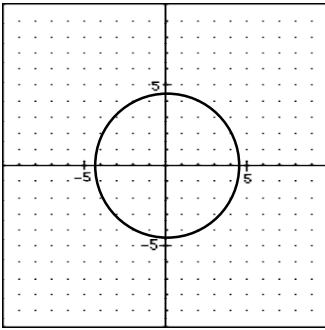


Problem Set 58 — Even Answers

2. $A = 20^\circ$

4. $\frac{55(5280)}{3600} \frac{\text{ft}}{\text{sec}} \approx 80.667 \frac{\text{ft}}{\text{sec}}$

6. This conic is an origin centered circle with a radius of 4.5.



8. $x = -\frac{3}{2}, 1$

10. $x = -1, \frac{3}{2}$

12a. $2^{\frac{1}{2}} = \sqrt{2}$

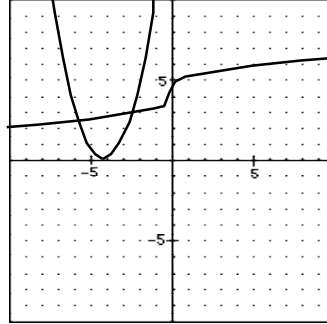
b. $2^{\frac{5}{6}}$

14. $x = -2, -\frac{5}{3}$

16a. $x = -1$

b. \emptyset

18. $x = 1 + \sqrt{2} \approx 2.414$



20.

22. $y = -\frac{11}{2}x + 18$

$x = \frac{36}{11}, y = 18$

24a. 68.2%

b. 84.1%

c. 2.3%

26. $x = \sqrt{85} \approx 9.220$

$y = \frac{30}{11}$

$k = \frac{5\sqrt{85}}{11} \approx 4.191$

28. $u = v = 60, w = x = 25$
 $y = z = 35$

30. $-2am^2p^{-1} + 5am^{-2}p$