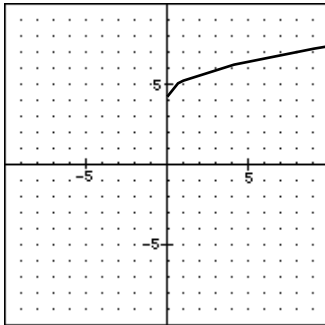


## Problem Set 37 — Even Answers

2. 24, 12

4. 2080 g

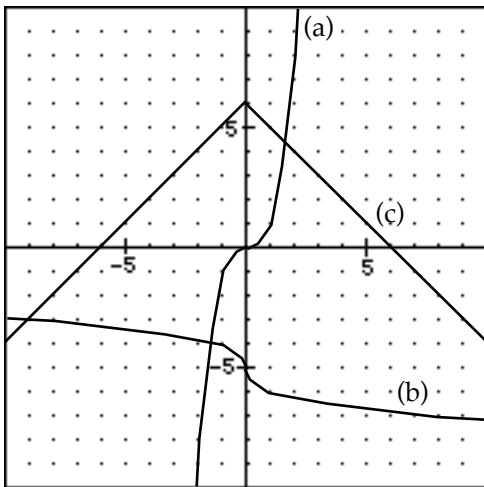
6.  $V = \frac{448}{3} \approx 149.333 \text{ in}^3$



8.

D:  $\{x \in \mathcal{R} \mid x \geq 0\}$

R:  $\{y \in \mathcal{R} \mid y \geq 4\}$



10.

12.  $c = 6.25$

14.  $A = 120, \quad B = 150, \quad C = 30$   
 $D = 30, \quad E = 60, \quad F = 30$   
 $G = 60$

16.  $x = -5, 1$

18.  $x = 7, 8$

20.  $x = -\frac{7}{4}, \frac{7}{4}$

22.  $x = \frac{2}{5} \pm \sqrt{7} \approx -2.246, 3.046$

24.  $x = \frac{2}{25}$

26.  $3\sqrt[3]{2}$

28.  $2(y + 2x)$

30.  $\frac{1}{16}$