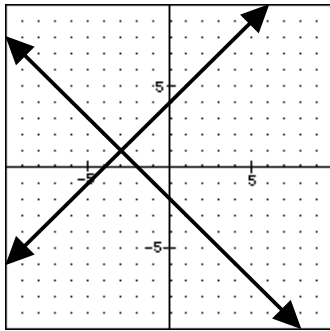


Problem Set 28 — Even Answers

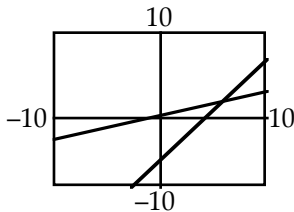
2. 6 mph

4. $2\sqrt{21}$ ft \approx 9.165 ft
 $2\sqrt{21} - 8$ ft \approx 1.165 ft

6. 50 nickels, 10 quarters



8. $(-3, 1)$



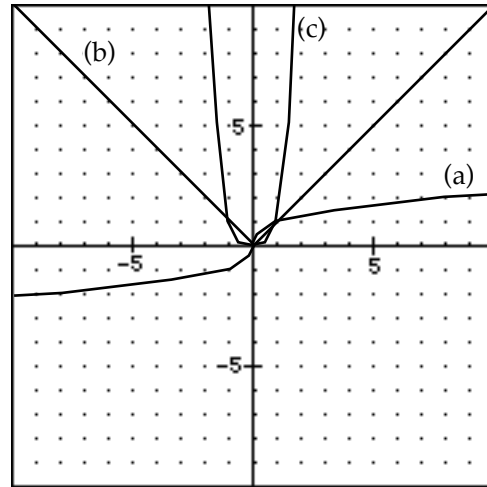
10. $(6.936, 3.396)$

12. $30 - 12\sqrt{2}$

14. 1×10^{-36}

16. $y = \frac{1}{2}x$

18. $y = \frac{8}{3}x - \frac{26}{3}$



20.

22a. $P(h) = \frac{1}{2}$

b. $P(h, h, h, h) = \frac{1}{16}$

24.

2	1	2	3	4	5	6	6	8	9
3	1	2	3						
4	7								

3 | 2 means 32

range = 26, mean = 28.231

median = 26, mode = 26

The mean is larger than the median because there is one number significantly larger than the other numbers. This affects the mean, but not the median.

26. $x = 30$

28. $x = \frac{96}{7}, y = \frac{108}{7}$

30. $2p^4x^{-8}y^{-9}$

