

## Problem Set 24 — Even Answers

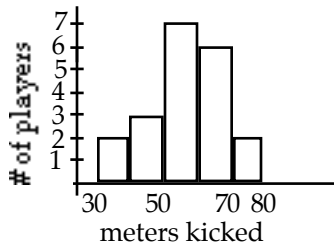
2. 25 nickels

4a. 64

b. 24

6a.  $P(8) = \frac{5}{36}$

b.  $P(>8) = \frac{5}{18}$



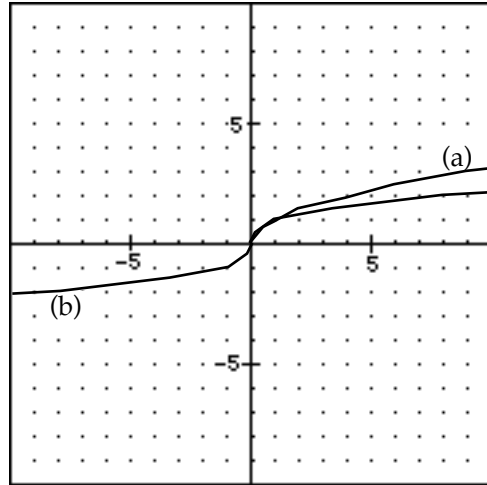
8.

10. 12

12. 336 ft<sup>2</sup>

14. 
$$\frac{2a^5 - 2a^5x^2 - 3x^3}{2a^4x^2}$$

16.  $-4x^4 + 2x^3 + 6x^2 - x - 1$



18.

20a.  $k(5) = 4$

b.  $k(a + 1) = \frac{1}{4}a + 3$

22a.  $d = 2\sqrt{13} \approx 7.211$

b.  $y = -\frac{3}{2}x + 7$

24.  $x = 37, \quad y = 26$

26.  $a = b = 25, \quad c = d = 30$   
 $e = f = 125$

the triangles are similar

28.  $-2a^{-1}x - 5a^{-1}x^{-1}$

30. -17