

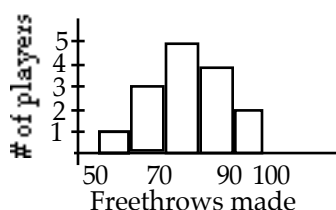
Problem Set 23 — Even Answers

2. 200,000 citizens

4. 4 times

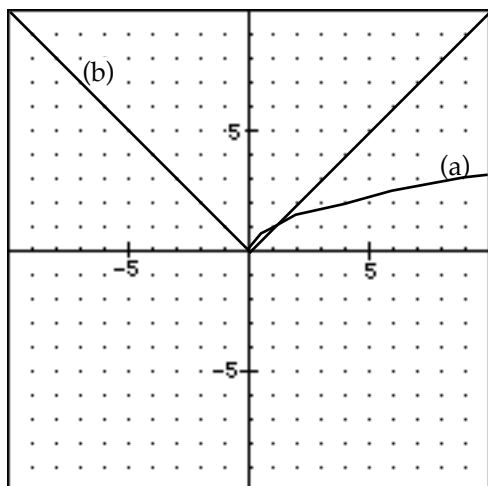
6. $T_M = 1$, $T_R = 4$

8. 9 expensive, 27 cheap



10.

12. range = 39, mean = 75.533
median = 76, mode = 76



14.

16a. $y = -4$

b. $x = 5\frac{1}{2}$

c. $y = 3x + 3$

18a. $d = 7\sqrt{2} \approx 9.899$

b. $y = -x + 2$

20. $p = \frac{63}{4}$, $t = \frac{45}{4}$

22. $SA = (284 + 171\pi) \text{ in}^2$
 $\approx 821.212 \text{ in}^2$

24. $75\pi \text{ ft}^2 \approx 235.619 \text{ ft}^2$

26. $a^{-5}x^3y^2$

28. 0

30. $-\frac{1}{2}$