

Problem Set 22 — Even Answers

2. 8 roses, 4 carnations

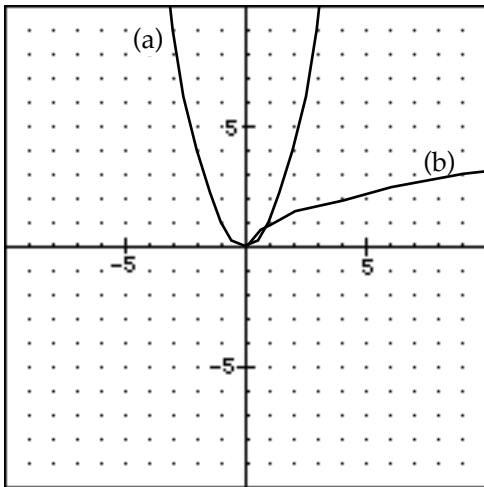
4. -2

6. $5x^2 + 8x + 4$

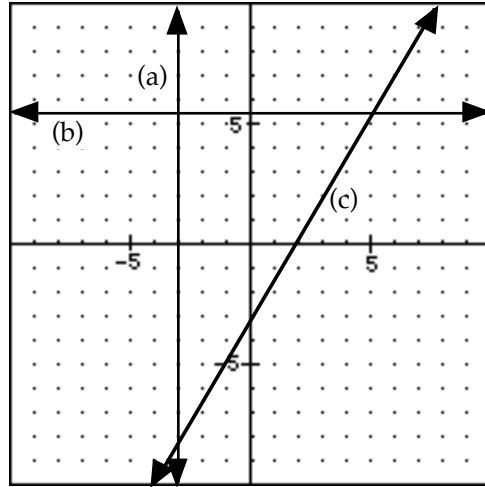
8. $T_M = 5$, $T_W = 0$

10. $\frac{28y^2z + 3x^2}{7y^2z}$

12. $SA = 216 \text{ in}^2$



14.



16.

18a. $d = \sqrt{106} \approx 10.296$

b. $y = \frac{9}{5}x + \frac{2}{5}$

20. $x = 3$, $a = \frac{9}{2}$, $b = \frac{15}{2}$

22. $a = 50$, $b = 25$
 $A = 5\pi \text{ in}^2 \approx 15.708 \text{ in}^2$
 $L = \frac{5}{3}\pi \text{ in} \approx 5.236 \text{ in}$

24. $-3x + 9px^{-1}y^3$

26. $p = \frac{23}{39}$

28. $x = -\frac{1}{2}$

30. -3

