

College Alg Even Answers

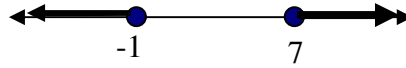
PS 22:

2] 2, 4, 6

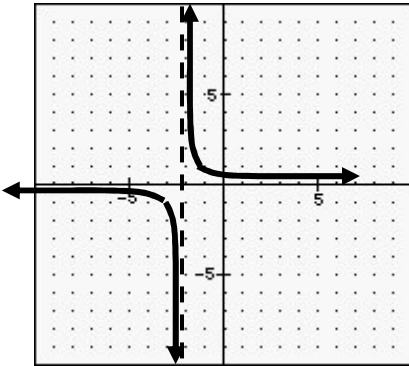
4] P = 10, N = 10, Q = 4

6] a) $-1 < x < 7$

b) $x \leq -1$ OR $x \geq 7$



8]



10] a) Function, 1 to 1 b) Function, Not 1 to 1

10c] Not a Function

d] Function, 1 to 1

12] 32

14] $\frac{9}{2}$

16] (3, -3) (3, 3) (-3, 3) (-3, -3)

18] $(2xb^2 - 3p)(4x^2b^4 + 6xb^2p + 9p^2)$

20] $\frac{4}{3} + 4i$

22] $\frac{a^3 + b}{b}$

24] $\frac{3 \pm \sqrt{11}i}{4}$

26] Proof using HL

28] $300\pi \text{ cm}^3$

30] C

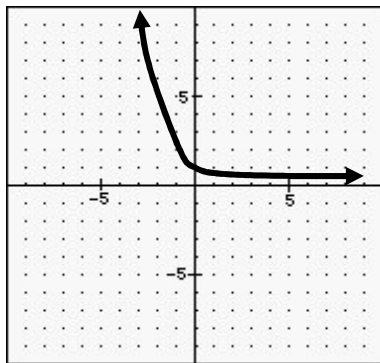
PS 23:

2] 15

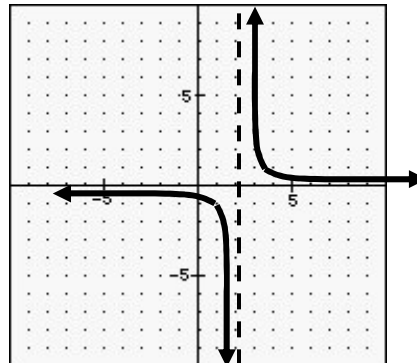
4] G = 5, R = 10, B = 2

6] 9 gallons

8]



10]



12] a) $x \in \mathcal{R}$ b) $x \in \mathcal{R}$ c) $\{x \in \mathcal{R} / x \neq 2\}$

14] $8\sqrt{3}$

16] 5 step proof using AAA similarity of triangles

18] (3, 3)

20] $a^3b^3(2b + 3a^2)(4b^2 - 6a^2b + 9a^4)$

22] $\sqrt{10} + \sqrt{5} - 10 - 3\sqrt{2}i$

24] mn

26] 5 step proof using AAS to prove triangles congruent

28] $900\pi \text{ m}^2$

30] B

PS 24:

2] 4, 6, 8, 10 and -12, -10, -8, -6

4] R = 3, G = 4, B = 2

6] 264 ml.

8] Exponential Curve graph using the points (-1,3) and (0,1)

10] a and b] Not a Function

12] a] $\{x \in \mathbb{R} / x \geq -6\}$ b] $\{x \in \mathbb{R}\}$ c] $\{x \in \mathbb{R} / x \neq 0\}$

14] a] 16 b] -4 c] 13

16] 33

18] $x^{5n+2}(4 + 3x^{3n+1})$ 20] $\frac{-31 - 8i}{15}$

22] xy

24] $\frac{-1 \pm \sqrt{33}}{6}$

26] 3 step proof using SAS

28] $150\pi \text{ cm}^2$

30] A

PS 25:2] $\frac{32}{13}$ hours

4] 162 men

6] $y = \frac{1}{2}x - \frac{1}{2}$

8] Exponential Curve Graph using the points (-1,4) and (0,1)

10] a] Function, not 1 to 1

b] Not a Function

c] Function, 1 to 1

d] Function, 1 to 1

12] a] 0 b] $\frac{1}{2} - \sqrt{3}$ 14] $\frac{1}{2}$

16] 32

18] $(x^{2a} + y^{2a})(x^a - y^a)$ 20] $\frac{3smr - 3sq}{2mr - 2q - 6rl}$ 22] $9x - 4z^{\frac{1}{2}}$ 24] $z = \frac{18kmt}{5m^2s + 12k^2}$

26] 4 step proof using SAS then CPCTC

28] $12\sqrt{3} \text{ m}$

30] C