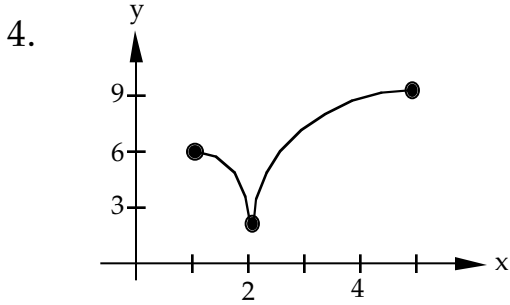


Problem Set 104

2. 1.5 cm^3



6. 0.609

8. 2

10. e

12. $f(0) = e^4$

14. $2\pi \int_0^1 (1+x)(x-x^2) dx$

16. $\pi e^{\tan x} + C$

18. $g'(35) = \frac{1}{30}$

20.
$$\frac{3x^2}{\sqrt{x^3-1}[\sin x + \cos(2x)]}$$

$$-\frac{2\sqrt{x^3-1}[\cos x - 2\sin(2x)]}{[\sin x + \cos(2x)]^2} + \cos x e^{\sin x}$$

22. $\delta = \frac{2}{3}\epsilon$

24. $f\left(-\frac{5\pi}{6}\right) = \frac{\sqrt{3}}{2}$