

Problem Set 75

2. $h(t) = -4.9t^2 + 10t + 200$
7.490 sec

4. D

6. $(-\infty, -c), (-c, \infty)$

8. 12,000 newtons

10. max: 8 min: 0

12. $5^{x^2+1} x \ln 25 + \frac{x+2}{(x+1)^{3/2}}$

14. $e^{-x}(x+1) + C$

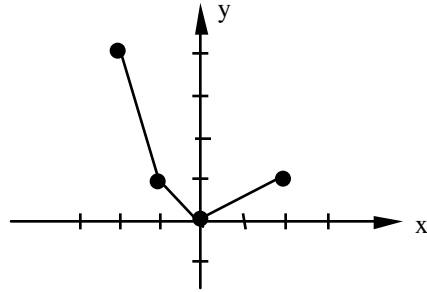
16. 1

18. C

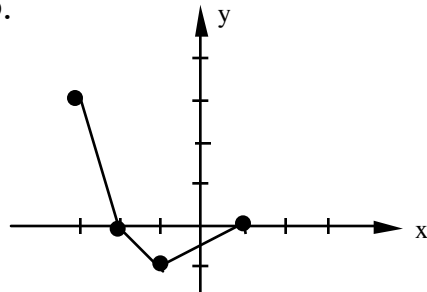
20. $\frac{1}{3} \text{ units}^2$

22. $(2 - \sqrt{2}) \text{ units}^2$

24a.



b.



c.

