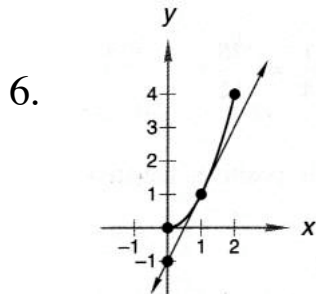


Calculus — Problem Set 15

2. $P = 40L - L^2$

4. $x = -2, 1, \pm\sqrt{3}$



Answers will varie:

$(1, 1), (0, -1)$

Slope = 2

8. $x = \frac{\pi}{6}, \frac{5\pi}{6}$

10. a) $y = \frac{1}{8}x^2 - \frac{1}{2}x + \frac{5}{2}$

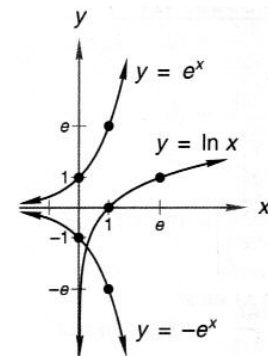
c) $(2, 2)$

12. -1

14. -3

16. $k = \frac{1}{2}$

18.



20. $x = -\frac{9}{7}$

22.

$\{y \in R \mid 2.99 < y < 3.01\}$

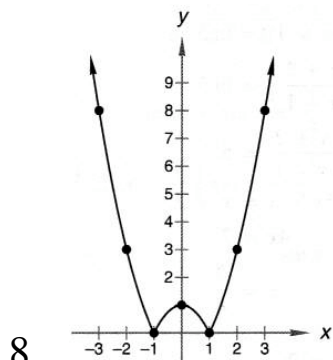
24. 25

Calculus — Problem Set 16

2. $A = \frac{1}{2}pw - w^2$

4. 6

6. $x = \frac{\ln 10}{2 - \ln 10}$



10. $x = 0$

12. b) $(0.5, 1.5625)$

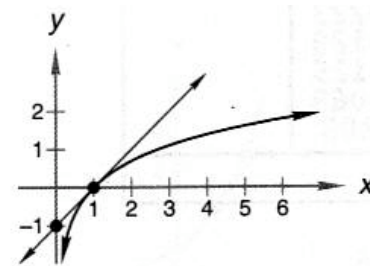
14. 2

16. 0

18. a) 2

b) As x approaches 0,
 y approaches 2.

20.



Answers will varie:

$(1, 0), (0, -1)$

slope = 1

22. 1

24. C